



Wells HVAC Supply
 930 W 21st St, Chicago, IL 60608
 Tel: (312) 800-8455

SUBMITTAL DATA SHEET

A-Coil Heat Pump System	
Location: _____ Engineer: _____ Submitted to: _____ Submitted by: _____ Reference: _____	Approval: _____ Date: _____ Construction: _____ Unit #: _____ Drawing #: _____ Inquiry: sales@wellshvacsupply.com

Set Code	22023110001427
Indoor unit code	22023111000491
Outdoor unit code	22023116000281
Set Model	
Indoor unit model	WUA-60DHFM
Outdoor unit model	WUCA-60HFMO
Certified	



SYSTEM PERFORMANCE DATA			
Power supply			
Normal Operational Voltage	(V, Ph, Hz)	208/230V, 1Ph, 60Hz	
Voltage Range	(V)	187-253	
Electrical			
Minimum circuit ampacity(Outdoor)	(A)	40.0	
Max.fuse(Outdoor)	(A)	50.0	
Connection wiring		N/A	
Cooling			
Capacity	(Btu/h)	53000(13400-54000)	
Power Input	(W)	6162(870-6100)	
Current	(A)	26.80(3.78-26.52)	
SEER2	(Btu/W)	14.5	
EER2	(Btu/W)	8.6	
Heating			
Capacity	(Btu/h)	55000(10800-60000)	
Power Input	(W)	5373(840-6380)	
Current	(A)	24.60(3.65-27.70)	
HSPF2-4	(Btu/W)	8.6	
HSPF2-5	(Btu/W)	7.1	
COP	W/W	3.00	
Heat at 17F(H32)	(Btu/h)	37000	
Heat at 5F(H42)	(Btu/h)	46500	
COP at 5F(H42)	W/W	1.80	

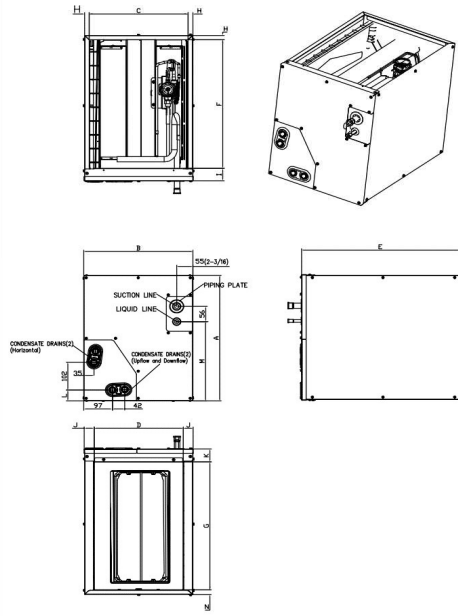
INDOOR UNIT DATA			
IRV	inch*3		190.00
Air flow	SCFM		1100
Pressure drop	Pa		72.00
	In. wg.		0.29
Air flow & Noise level			
Indoor air flow (Hi/Med/Lo) (No duct)	(CFM)		//1117.65//
Indoor noise level (Hi/Med/Lo)	[dB(A)]		0/0/0
Dehumidification	(L/H)		8.3
Indoor unit			
Dimension (WxDxH)	(inch)	24.49x20.98x27.99	
	(mm)	622x533x711	
Packing(WxDxH)	(inch)	27.76x26.18x30.31	
	(mm)	705x665x770	
Net/Gross weight	(lbs.)	86.64/98.33	
	(kg)	39.3/44.6	

REFRIGERANT PIPE DATA			
Throttle type	Indoor unit	TXV	
	Outdoor unit	EEV for heating	
Design pressure	(PSIG)	550/340	
Refrigerant Type		R410A	
Refrigerant charge	oz	169.32	
Refrigerant precharge	(ft)	25.0	
	(m)	7.5	
Additional charge for each ft	(oz/ft)	0.69	
Additional charge for each m	(g/m)	65.0	
Liquid side/ Gas side(indoor)	(inch)	3/8" / 7/8"	
	(mm)	9.52/22	
Liquid side/ Gas side(outdoor)	(inch)	3/8" / 7/8"	
	(mm)	9.52/22	
Max. pipe length	(ft)	213.3	
	(m)	65.0	
Max. difference in level	(ft)	98.4	
	(m)	30.0	
Connection method		Flared	
Indoor(cooling)	(Deg. °F)	60 ~ 90	
	(Deg. °C)	16 ~ 32	
Indoor(heating)	(Deg. °F)	32 ~ 86	
	(Deg. °C)	0 ~ 30	
Outdoor(cooling)	(Deg. °F)	5 ~ 122	
	(Deg. °C)	-15 ~ 50	
Outdoor(heating)	(Deg. °F)	-22 ~ 75	
	(Deg. °C)	-30 ~ 24	

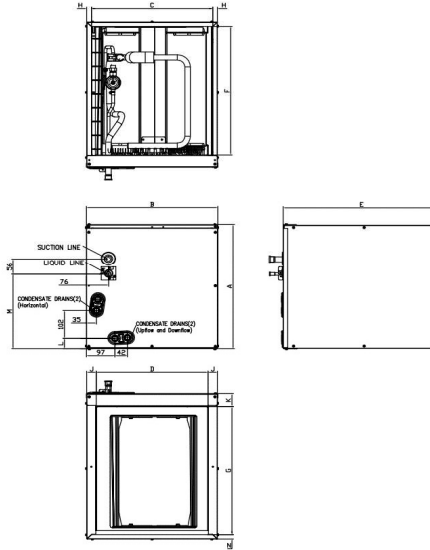
OUTDOOR UNIT DATA			
Compressor			
Type		ROTARY	
Model		EAPQ440D1UMUA	
Brand		GMCC	
Capacity	(Btu/h)	46335	
Input	(W)	3770	
Rated current (RLA)	(A)	26.2	
Refrigerant oil/oil charge	(ml)	POE.VG75/1300	
Outdoor fan motor			
Model		ZKFN-85-8-22-5	
Qty		2	
Input	(W)	126.0	
Output	(W)	85	
RLA	(A)	1.2	
Speed	(r/min)	850/750/650	
Air flow & Noise level			
Outdoor air flow (Max.)	(CFM)		4500
Outdoor noise level	[dB(A)]		62.0
Outdoor unit			
Dimension (WxDxH)	(inch)	37.48x16.34x52.48	
	(mm)	952x415x1333	
Packing (WxDxH)	(inch)	43.11x19.49x58.27	
	(mm)	1095x495x1480	
Net/ Gross weight	(lbs.)	239.86/271.61	
	(kg)	108.8/123.2	

Indoor unit dimension

NEW PANEL STYLE



OLD PANEL STYLE



Dimensions	KV-14F-A		KV-14F-B		KV-17F-A		KV-17F-B		KV-21F-A		KV-21F-B		KV-24F-A	
	NEW PANEL STYLE 18K/20K/22K/24K		NEW PANEL STYLE 30K/33K/37K		NEW PANEL STYLE 50K/56K		OLD PANEL STYLE 18K/24K		OLD PANEL STYLE 30K/36K/48K		NEW PANEL STYLE 48K		OLD PANEL STYLE 60K	
Model(Btu/h)	inch	mm	inch	mm	inch	mm	inch	mm	inch	mm	inch	mm	inch	mm
A Model Height	18	457	23-1/2	598	23-1/2	599	18	461	24	609	28	711	28	711
B Model Width	14-1/2	368	14-1/2	368	17-1/2	445	17-1/2	445	21	533	21	533	24-1/2	622
C Supply Air Opening Width	13-1/4	336	13-1/4	336	16-3/16	411	16-3/16	411	19-3/4	502	19-3/4	502	23-1/4	591
D Return Air Opening Width	12	303	12	303	15-1/8	384	15-1/8	384	19-1/2	496	19-1/2	496	23	585
E Model Depth	21	534	21	534	21	533	21	533	21	533	21	533	21	533
F Supply Air Opening Depth	18-5/8	473	18-5/8	473	18-5/8	473	18-5/8	473	18-5/8	473	18-5/8	473	18-5/8	473
G Return Air Opening Depth	18-1/2	471	18-1/2	471	18	458	18	458	18-1/2	470	18-1/2	470	18-1/2	470
H Supply Air Opening Side Clearance	5/8	16	5/8	16	5/8	16	5/8	16	5/8	16	5/8	16	5/8	16
I Supply Air Opening Front Clearance	1-3/4	45	1-3/4	45	1-3/4	45	1-3/4	45	1-3/4	45	1-3/4	45	1-3/4	45
J Return Air Opening Side Clearance	5/8	16	5/8	16	1-3/16	30	1-3/16	30	3/4	19	3/4	19	3/4	19
K Return Air Opening Front Clearance	1-13/16	46	1-13/16	46	1-13/16	46	1-13/16	46	1-13/16	46	1-13/16	46	1-13/16	46
L Condensate Drains Height	1-9/16	40	1-9/16	40	1-7/16	37	1-7/16	37	2-1/8	54	2-1/8	54	2-1/8	54
M Liquid Line Height	11-1/2	292	11-1/2	292	16-1/2	418	10-7/8	276	16-5/16	414	21	533	20-1/4	514
N Return Air Opening Side Clearance	3/4	19	3/4	19	3/4	19	1-3/16	30	3/4	19	3/4	19	3/4	19

Outdoor unit dimension

